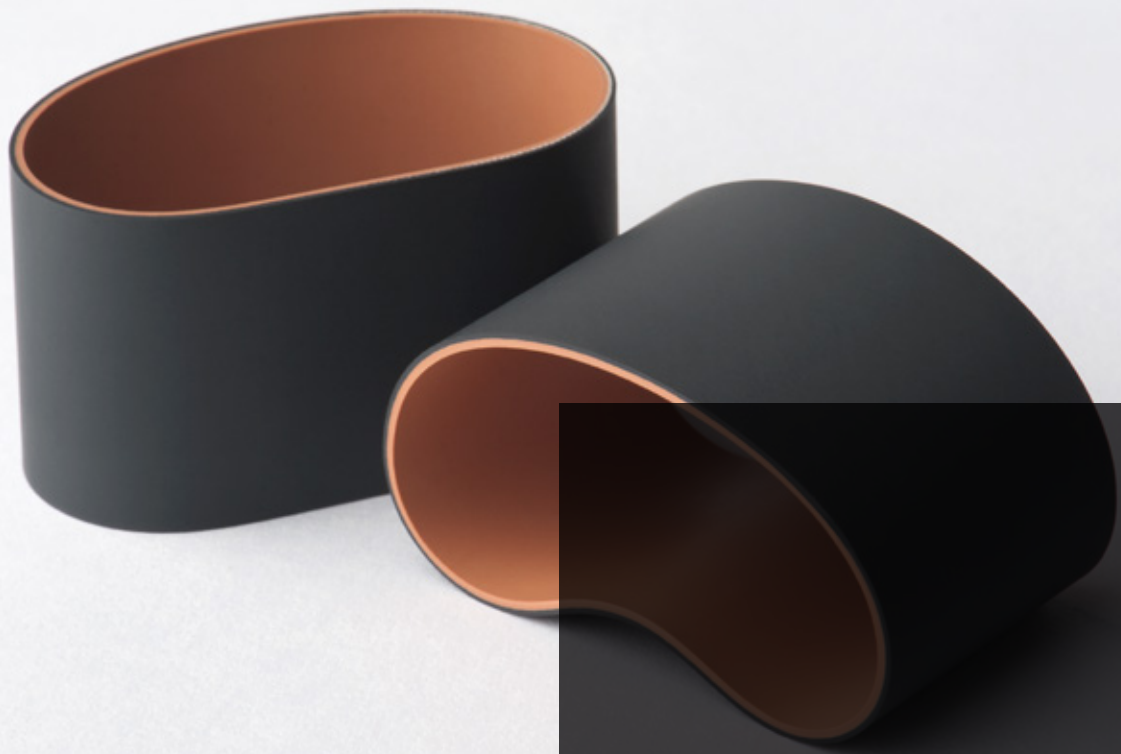


# 45 years



Excellence in Quality

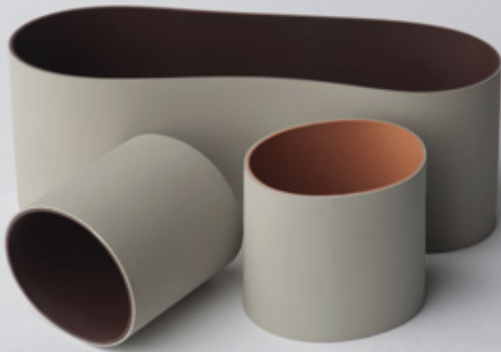
**PROTEXT**



For 45 years, the Protex<sup>®</sup> brand has been consolidating its leadership as cots and aprons producer in the Americas, leading with innovative solutions always allied to high technology in products for high spinning performance in natural, artificial and synthetic fibers.

Innovation, technology, quality and commitment with clients success are the main business of Protex<sup>®</sup>. With clients on textile industry in Europe, Asia, Latin America and Central America, the company has decided to expand its scope to the printing industry and created the Prograf<sup>®</sup> brand, which produces and sells rolls using the highest quality of raw material, what guarantee high performance and durability for all the products line.

# aprons



Flexible compound that allows an excellent fiber control. Resistant to abrasion and ozone.



## roving

Position	Fiber	Code	Color
Top	All fibers	PL-7833	Light Grey/Beige
Bottom	All fibers	PL-7873	Light Grey /Brown

## compact spinning

Position	Fiber	Code	Color
Top	Cotton Extra Fine Counts (Ne 40+)	PL-7881	Light Grey/Green
Top	Cotton Fine and Medium Counts	PL-7281	Dark Grey/Green
Bottom	Cotton Extra Fine Counts (Ne 40+)	PL-7881	Light Grey/Green
Bottom	Cotton Fine and Medium Counts	PL-7281	Dark Grey/Green
Bottom	Cotton Double Roving	PL-5981	Red/Green



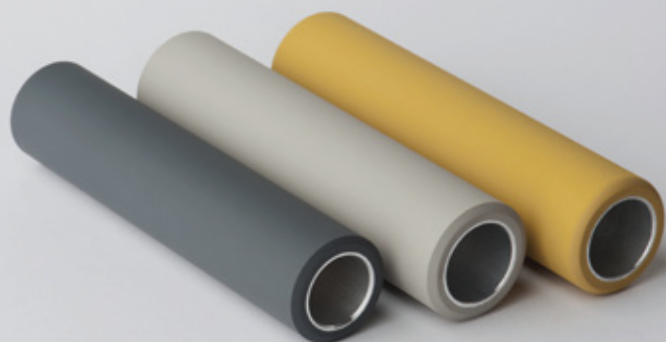
air jet  
spinning system

Position	Fiber	Code	Color
Top	All Fibers	PL-9481	Black/Green
Bottom	All Fibers	PL-9481	Black/Green

conventional  
spinning frame

Position	Fiber	Code	Color
Top	Combed Cotton	PL-7833	Light Grey /Beige
Top	Combed/Carded Cotton	PL-7873	Light Grey /Brown
Top	Blends/Synthetic	PL-7233	Dark Grey/Beige
Top	Cotton with Elastane	PL-9433	Black/Beige
Bottom	Combed Cotton	PL-7833	Light Grey /Beige
Bottom	Combed/Carded Cotton	PL-7873	Light Grey /Brown
Bottom	Blends/Synthetic	PL-7273	Dark Grey /Brown
Bottom	Cotton with Elastane	PL-7233	Dark Grey /Beige
Bottom	Cotton with Elastane and PES Filament	PL-7281	Dark Grey /Green
Short Bottom	All Fibers and Counts	PL-9473	Black/Brown

# cots



Developed for natural, synthetic and artificial fibers. Antistatic with high resilience.

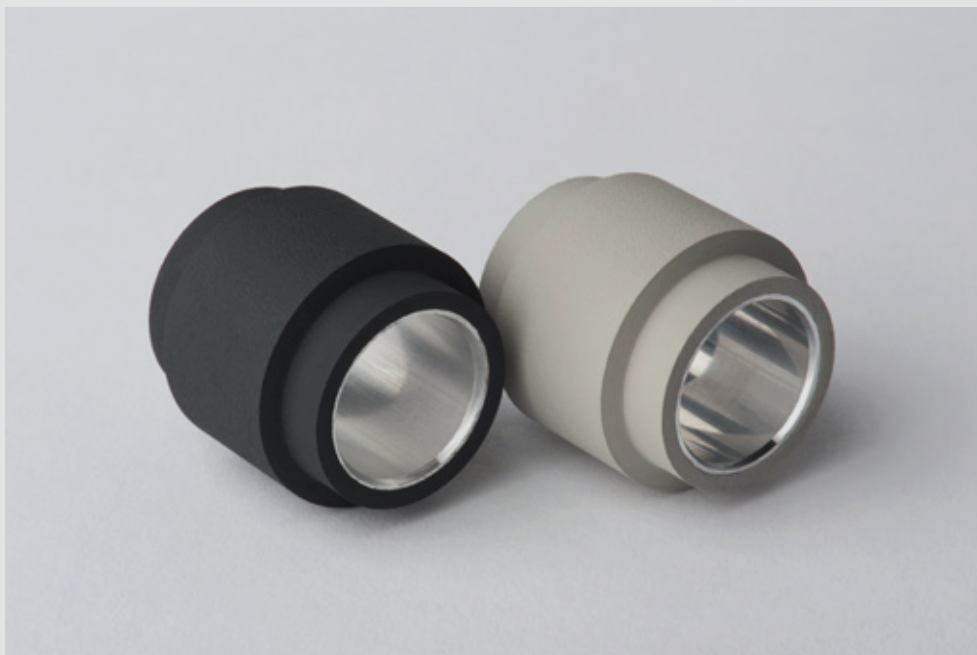


## drawing

Application	Fiber	Code	Color	Shore A
1ª "pass"	Cotton	PL-975	Graphite	75°
1ª "pass"	Blends/Synthetic	PL-583	Grey	83°
2ª "pass"	Cotton	PL-970	Yellow	70°
2ª "pass"	Blends	PL-975	Graphite	75°

## combing

Application	Fiber	Code	Color	Shore A
Draw Box	Cotton	PL-970	Yellow	70°
Detaching Roller	Cotton	PL-572 Soft	Red/Black	72° / 50°
Detaching Roller	Cotton	PL-568	Green	68°



## roving

Application	Fiber	Code	Color	Shore A
Back, Intermediate and Front	Cotton	PL-572	Red	72°
Back, Intermediate and Front	Blends	PL-975	Graphite	75°
Back, Intermediate and Front	100% PES/100% Visc/PV	PL-583	Grey	83°

## air jet spinning system

Application	Fiber	Code	Color	Shore A
Back/Intermediate	Cotton /Blends	PL-583	Grey	83°
Back/ Intermediate	100% PES/100% Viscose	PL-583	Grey	83°
Back/ Intermediate	PA/PV	PL-583	Grey	83°
Front	100% Cotton	PL-750	Black	75°
Front	Cotton /PA/PV	PL-583	Grey	83°
Front	100% PES/100% Viscose	PL-583	Grey	83°

# cots



## conventional spinning frame

Application	Fiber	Code	Cor	Shore A
Back	Cotton	PL-175	Orange	75°
Back	Blends/ Synthetic	PL-583	Grey	83°
Front	Combed Cotton	PL-963	Lilac	63°
Front	Combed/Carded Cotton	PL-568	Green	68°
Front	Cotton with Elastane	PL-568/P	Black	68°
Front	Cotton /Polyester	PL-572	Red	72°
Front	Viscose	PL-975	Graphite	75°
Front	100% Polyester/100% Viscose/PV	PL-583	Grey	83°



Excellent grip,  
providing high  
quality yarns.

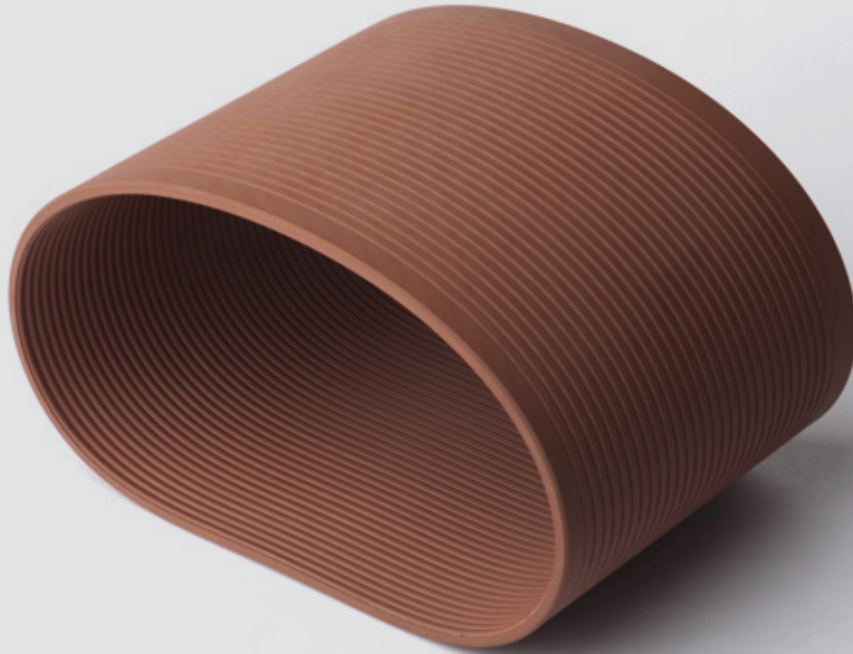
## compact spinning

Application	Fiber	Code	Cor	Shore A
Back	Cotton	PL-175	Orange	75°
Drawing Front	Cotton	PL-572	Red	72°
Compaction Front	Cotton	PL-568	Green	68°

## open end

Application	Fiber	Code	Cor	Shore A
Friction Roller	Cotton, Medium to Fine counts.	PL-975	Graphite	75°
Friction Roller	Cotton/Synthetics, Thick Counts.	PL-583	Grey	83°

# cots coverings aprons



washing, spin finish  
and stretch breaking

Position	Fiber	Code	Color	Shore A
Washing	Acrylic/Polyester/Recycled	PL-782	Pink	65°
Spin finish	Acrylic/Polyester/Recycled	PL-185	Black	85°
Stretch Breaking	Acrylic/Polyester/Recycled	RC-355	Yellow	92°
Stretch Breaking	Acrylic/Polyester/Recycled	RC-357	Green	92°

integrated drawing frame

Position	Fibra	Code	Color	Shore A
Drawing Cylinder	Acrylic	RC-355	Yellow	92°

Products resistant to spin finish abrasion and high temperatures.



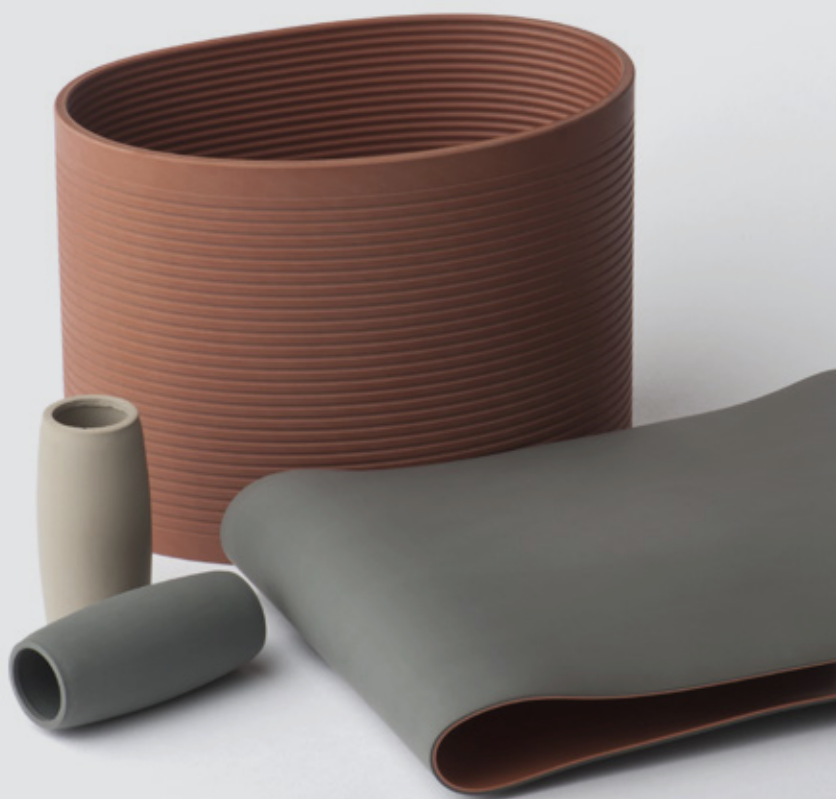
### intersecting drawing

Position	Fiber	Code	Color	Shore A
Drawing Cylinder	Wool / Acrylic	PL-583	Grey	83°
Drawing Cylinder	Polyester / Recycled	RC-355	Yellow	92°

### roving

Position	Fiber	Code	Color	Shore A
Back / Front Rollers	All fibers	PL-583	Grey	83°
Top Apron	All fibers	PL-7233	Dark Grey /Beige	
Bottom Apron	All fibers	PL-7273	Dark Grey /Brown	

# cots coverings aprons



## frame

Position	Fiber	Code	Color	Shore A
Back Cylinder	Wool / Acrylic	PL-583	Grey	83°
Drawing Front Cylinder	Wool / Acrylic	PL-975	Graphite	75°
Aprons	Wool / Acrylic	PL-7233	Dark Grey/Beige	
Balloon Cots	Wool / Acrylic	PL-720	Dark Grey	
Rubbing Apron	Wool / Acrylic	PL-470	Brown	

Following the market trends of long staple fiber, the Protex<sup>®</sup> products offer a high precision and quality for thin and extra thin yarns.

## spinning frame

Position	Fiber	Code	Color	Shore A
Back	All Fibers	PL-583	Grey	83°
Front	100% Wool, Wool/ Acrylic, Extra Thin Counts	PL-963	Lilac	63°
Front	100% Wool, Wool/ Acrylic, Extra Thin Counts	PL-568 Soft	Green/Black	68°/50°
Front	Synthetic, Thin Counts.	PL-975	Graphite	75°
Front	Synthetic, Medium and Thick Counts	PL-583	Grey	83°
Top Apron	All Fibers	PL-7233	Dark Grey /Beige	
Bottom Apron	All Fibers	PL-7273	Dark Grey /Brown	

# soft cots double layer

## PL-572 Soft

**Cover: 72° shore A**

**Core: 50° shore A**

For detaching cylinder of combing, the PL-572/Soft has an excellent performance and long cycle of life. Better distribution of pressure exercised over the cylinder that allows the cotton veil pass through it with high quality and uniformity.



## PL-572 Soft

**Cover: 72° shore A**

**Core: 50° shore**

## PL-975 Soft

**Cover: 75° shore A**

**Core: 50° shore A**

Drawing and compactor cots. For compact spinning machines they are antistatic and has high abrasion resistance with a great grip. Offering considerable increase in the finish grinding cycle.



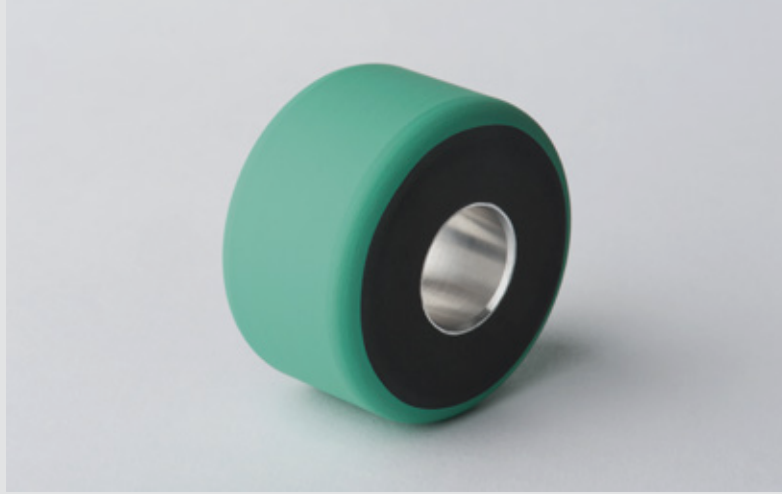
Life span in Compact Machine (days):  
Grinding cycle 100% Cotton,  
Count Ne 30/1

35

Traditional Cots 70° and 75° Shore

70

PL-572 / PL-975 Soft Protex®



## PL-568 Soft

**Cover: 68° shore A**

**Core: 50° shore A**

For Spinning of long staple, wool and blends, wool with acrylic, alpaca, cashmere, thin counts. Has high resilience, with excellent performance, is antistatic and resistant to the fiber abrasion.

## PL-583 Soft

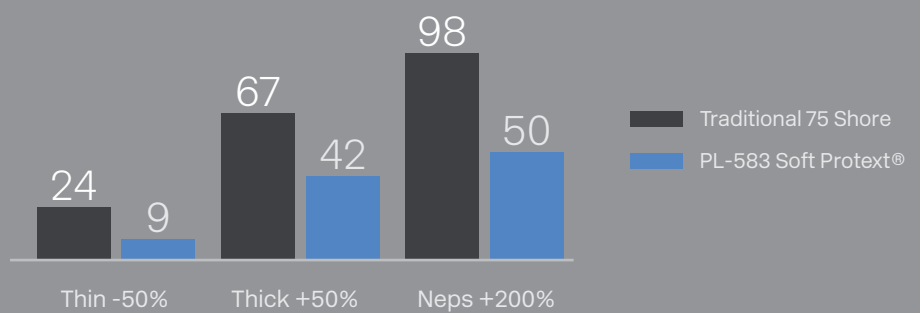
**Cover: 83° shore A**

**Core: 50° shore A**

Barrel shaped for Air Jet Spinning. Improve the yarn uniformity. Exclusively developed for high speed machine. Less thin and thick points. Neps decrease with less fibers return.

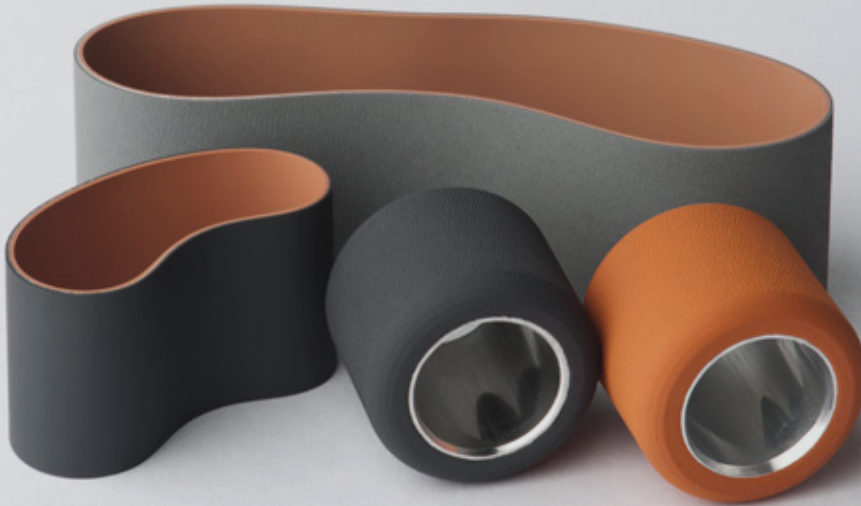


**Yarn uniformity:**  
Air Jet System Spinning  
Count: Ne 30/1 Front cot



# elastane kit

The Protex<sup>®</sup> Elastane Kit was made for the application in cotton with elastane on ring spinning providing more durability. It facilitates the elastane centralization and allows a production with less thin and thick.



	U%	CVm	Thin	Thick	Neps	Tenacity
Protex <sup>®</sup> Elastane Kit	9,6	12,2	0	39	51	15
Traditional Cots and Aprons	10,3	13,1	2	83	61	14,4

Protex<sup>®</sup> Elastane Kit

9,6

12,2

0

39

51

15

Traditional Cots and Aprons

10,3

13,1

2

83

61

14,4

**Yarn Uniformity:**  
Elastane Spinning System  
Cotton Ne 12/1 den. 70.

Top Apron:

**PL-9433**

Bottom Apron:

**PL-7233 "ER" high roughness**

Back Cot:

**PL-175 (75° shore A, orange)**

Front Cot

**PL-568/P (68° shore A, black)**



# compact spinning system

PROTEXT



## Cots

Products with a good grinding cycle finishing. Antistatic with excellent grip which allows more uniformity in the yarn drawing.

**PL-572 - 72° shore A - red**

Intermediate (drawing)

**PL-583 - 83° shore A - grey**

Front (compactor)



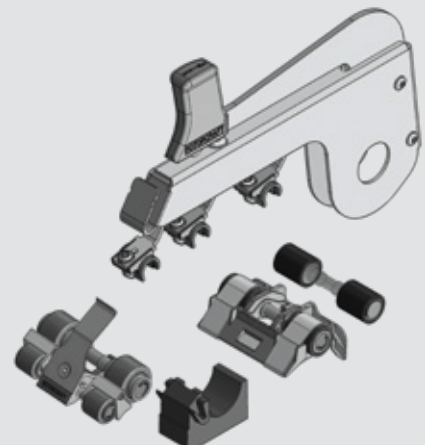
## Aprons

Made with high quality raw material and abrasion resistant. Are flexibles and with high resistance to deformation.

**PL-5981**

**PL-7281**

**PL-7881**



# texturing



Apron TX-5981  
Cot PL-470

**(70° shore A - brown)**

For polyamide and polyester,  
provide high ozone resistance.  
Abrasion resistant, spin finish  
oilt and high temperatures.

# narrow fabric

High resilience,  
deformation resistant  
and good durability even  
with chemical products.

PL-185

**(85° shore A - black)**

Covering of loom cylinder

PL-782

**(65° shore A - pink)**

Covering of dyeing cylinder

PL-1580

**(80° shore A - brown)**

Covering of warping cylinder



# system traction

PROTEXT

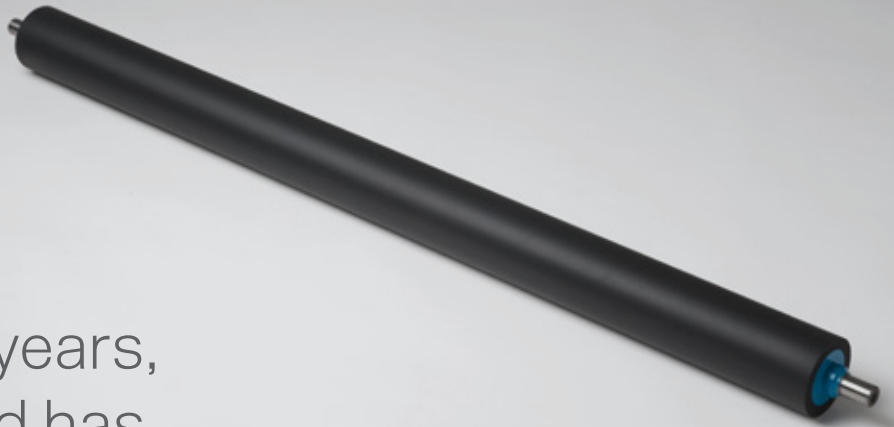
Very resistant to friction and bear pressure up to 250kg.

RC-355  
(92° shore A – yellow)

RC-357  
(92° shore A – green)

Pulley covering for bobbins of yarns in circular loom of raffia and pulley covering of transportation.





For more than 45 years, the Protex<sup>®</sup> brand has been consolidating its leadership in the market 100% products made in Brazil, since the rubber development until the done product.

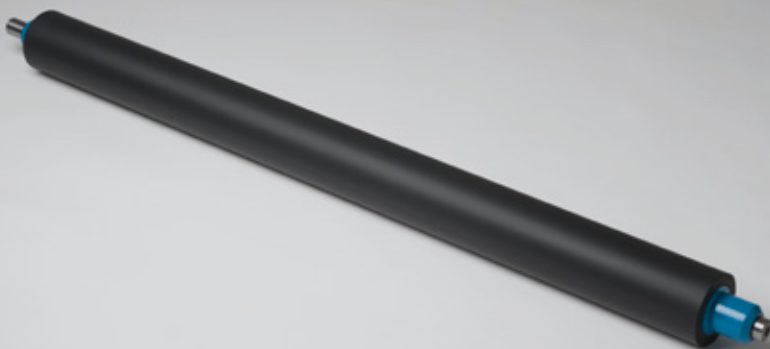
Innovated and practical solutions, allied to high quality, technology and compromising with our client's success, is part of the sustainability strategy of the Protex<sup>®</sup> brand.

Trust in technology for a high quality printing oriented to the future, satisfying the quality of more elevated requirements of printer.

## printing rollers

### Premium Pro

Great for printers projected for plan and rotate printing. It can stock and transfer the ink, what guarantee uniformity.



## Hydro Pro

Compounds resistant to deterioration surface by alcohol substitutes, mostly for the velocity differential used in the wet systems, which makes a premature, erode in the “nip” of the rubber rolls.

Stable compound that keeps its hardness and dimensions, offers stability to the modern systems to wet with the most current water control and high resistance to absorption.

## Pro Duplex

Eliminate the costs with the substitution time, as a coat that minimize the necessity of rolls adjustment. Pre adjust the watering roll and change the conventional inks and UV indistinctly.

Its formula offer high stability and meet all the specifications, keeping its hardness and dimensions for much longer in face of works conditions.



# folding cylinder

Soft rollers with high memory and big traction.

PL-430  
Hardness 60° shore A - red

PL-430/P  
Hardness 60° shore A - black

PL-470  
Hardness 70° shore A - brown

# global presence

Countries Served



## Services

Orientation to finish grinding and cots treatment.

Grinding's services in roller of roving, spinning frame, cylinder of drawing and combings.

Technical Assistance with product alternatives to specific spinning systems.

Cylinders covering for drafting and combing.





**protext**  
**.com**  
**.br**



1700, Ivy Reibel,  
Nova Odessa  
São Paulo / Brazil  
+55 19 21092165

